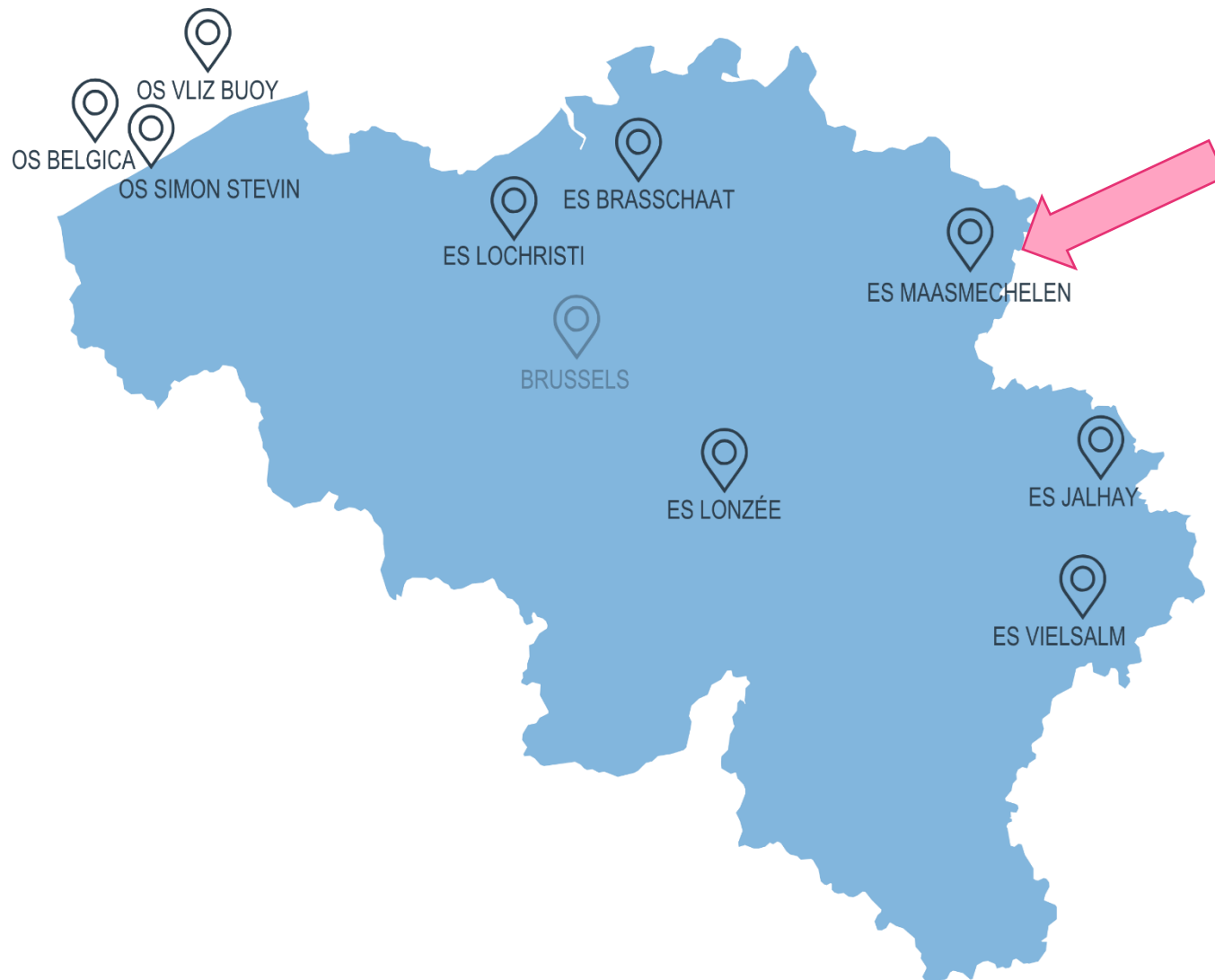




# ICOS

● ● ●  
INTEGRATED  
CARBON  
OBSERVATION  
SYSTEM

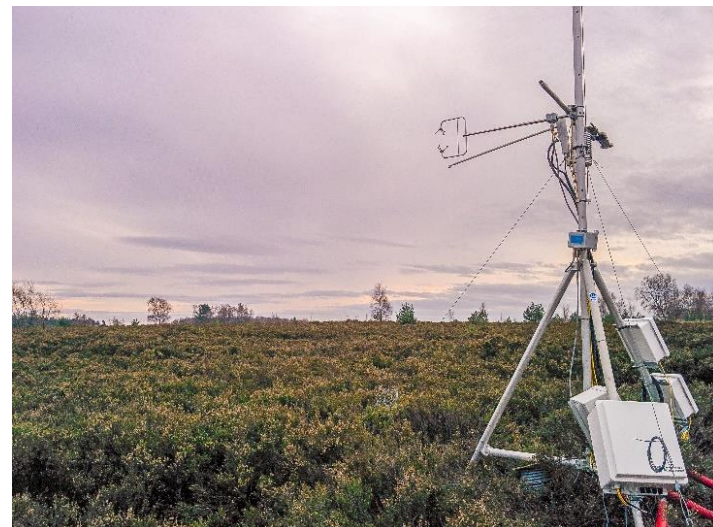
Newest ecosystem station of the UAntwerpen:  
**Maasmechelen (BE-Maa)**





## MAASMECHELEN, BE-Maa

- CLASS 2 ecosystem station
- Heathland vegetation:  
woody shrubs (eg. *Calluna vulgaris*)
- National Park “Hoge Kempen”
- Poor, dry, sandy soil
- Management on microscale by ANB  
mowing, ploughing, burning
- Close coupling to nearby ECOTRON+  
(Uhasselt, ANAEE)
- Partners:



## MAASMECHELEN, BE-Maa

- Most instruments installed and measuring:
  - EC setup
  - Radiation
  - Air temperature and humidity
  - Backup meteo station
- To be installed:
  - Soil plots
  - N<sub>2</sub>O and CH<sub>4</sub> EC
  - Weighing rain gauge
  - Fast and slow O<sub>3</sub> analyser
  - NO<sub>2</sub>-NO<sub>x</sub> slow analyser



## MAASMECHELEN, BE-Maa

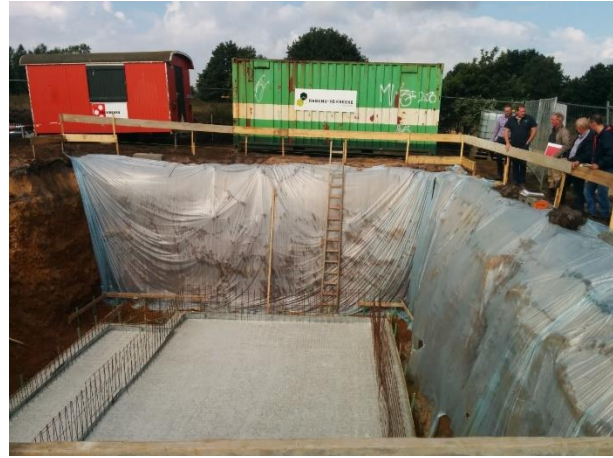
- Nicola, together with Jan, in charge of all measurements and installation of instruments. Marilyn is site PI
- Only ICOS station to measure in shrubland (so far)

Protocols to be followed...?





## Construction of underground cabin





## Launch event March 22







[www.icos-belgium.be](http://www.icos-belgium.be)

